

Ability to Drive Shared Parameters Into Families

Family Processor is a tool that allows you to define one or more changes to one or more Revit family files, and then process those changes in batch.

The Pain Point

Making changes to family files is a time consuming manual process. The people with the skills to properly make changes to families are usually in high demand and can't spare days or weeks of time to manually push a change into their family library.

Key Features

Add Shared and Family Parameters, and for those new parameters:

- Define whether they are instance or type
- Set their group
- Set or clear their default value or formula
- Define a family parameter's name
- Define a family parameter's type

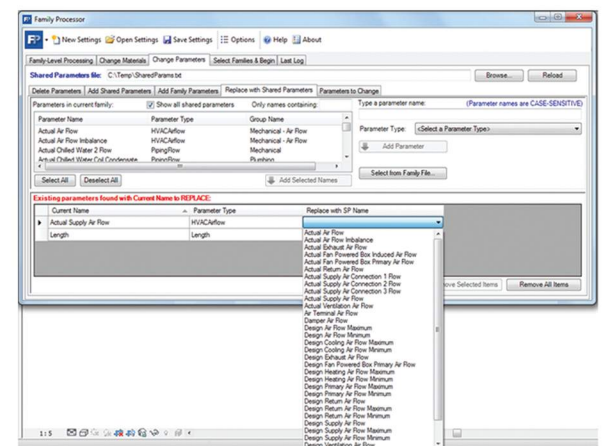
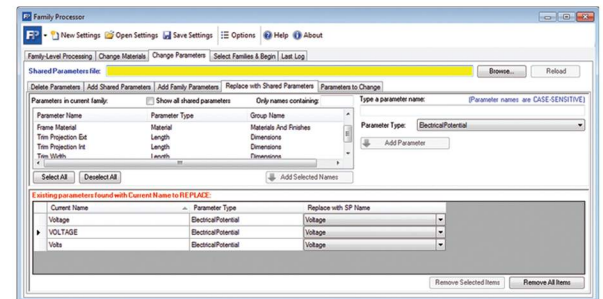
Change Existing Parameters

- Value
- Formula
- Whether they are instance or type
- The Name, for family parameters

Modify Materials in Selected Families

- Delete one or more materials, with a special option to delete the default materials
- Create materials
- Change the name, transparency value and basic red, green, and blue values for materials

The ability to automate these tasks with accuracy and consistency can provide enormous time and cost savings, as well as reduce the likelihood of human error in your families.



Intended Audience:

Revit Power Users and BIM Managers

Competitive Advantage:

Enables making batch changes to family files. This allows users to push standards, consolidate shared parameters, or make changes to families across their library of content.

Video:
 Demo

for digital copy